

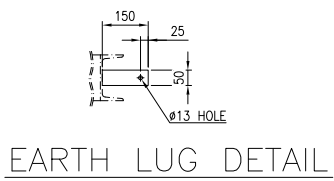
- NOTES:**
1. ALL OF FLANGE BOLT HOLES TO STRADDLE NORTH & SOUTH C OR NATURAL HORIZ. & VERT. C OF VESSEL.
 2. THE TELL-TALE HOLES SHALL NOT BE PROVIDED ON THE REINFORCEMENT PLATE IN THE LONGITUDINAL DIRECTION OF VESSEL.
 3. GASKET CONTACT SURFACE OF FLANGE SHALL BE FINISHED WITH 125 ARRH.

INDOOR

ITEM	PART NAME NAME OF PART	MATERIAL	REQ'D NO.	SP1	SP2	UNIT	REMARKS
1	WATER TUBE	A178-A	1				#50.8x12.9/t3.2
2	STEAM DRUM	A516-70	1				#1100x132
3	WATER DRUM	A516-70	1				#950x128
4	FRONT&REAR HEADER	A106-B	2				6"xSch.80
5	CONNECTION TUBE	A178-A	1				#63.5x13.2
6	INSULATION	MINERAL WOOL	1				#80/t150
8	OUTER CASING	C.S	1				t0.8
9	COMBUSTION BOX	A36	1				t9
10	GAS DUCT	A283-C	1				t6
11	AIR DUCT	A283-C	1				t6
12	DRUM SUPPORT	A283-C	2				t12
13	HEADER SUPPORT	SS400	2				Channel 100x50x5/7.5
14	BASE FRAME	SS400	1				Channel 150x75x6.5x10
15	SURFACE PLATE	A36	1				t3.2
16	2nd SEPARATOR	A36	1				t3.2
17	1st SEPARATOR	A36	1				t3.2
18	CASTABLE	CT-160	1				t60
19	MANHOLE	A516-70	1				305x406
20	PEEP HOLE	A106-B	3				2" x SCH160 #300
21	FURNACE PRESS GAUGE	304	1				1 1/2" x SCH160 #300
22	PRIMARY S/H	A335-P11/A213-T11	1				8"xSCH.80 / #50.8x4
23	SECONDARY S/H	A335-P11/A213-T11	1				8"xSCH.80 / #50.8x4

DESIGN DATA			
CODE	ASME SEC. I 2010 ED. TYPE	WATER TUBE	
TEMA CLASS	-	CODE STAMP	NO
EVAPORATION/SAT. STEAM	29,945 Kg/h	ERECTION	-
PRESSURE (Kg/cm2g)	DESIGN 21	WEIGHT (KG)	OPERAT. 49,940
	OPERAT. 18	EMPTY	37,000
DRUM	DESIGN 280	TEST	55,780
TEMP.(°C)	OPERAT. 208.9	FLUID	STEAM/WATER
S/H TEMP.	DESIGN 400 / 450	FIRE PROOF. (MM)	-
(PRI./SEC.)(°C)	OPERAT. 260 / 265	SP.GR.(Kg/M³)	-
TEST PRE. (Kg/cm2g)	HYDRO. 31.5	SURFACE AREA (M2)	387.2
	PNEUM. -	FURNACE VOLUME (M³)	39.4
C.A (DRUM/NOZZLE) (MM)	3.0 / 1.6	REGULATION	-
RADIOGRAPH(SHELL/HEAD)	FULL / SEAMLESS	NO. OF PASS	-
JOINT EFF.(SHELL/HEAD)	1.0 / 1.0	SEISMIC CODE	ZONE 1 (KBC)
P.W.H.T	YES	CONTENT LETHAL	-
TYPE OF FUEL	FLUE GAS	PAINT	SEE SPEC
WIND DESIGN	IN DOOR	INSULATION (MM)	MINERAL WOOL (125t)

NOZZLE LIST						
MARK	REQ'D NO.	SIZE	SCH.	RATING	SERVICE	REMARKS
N1	1	8"	80	ANSI 300# WN.RF	STEAM OUT	A106-B / A105
N2	1	3"	80	ANSI 300# WN.RF	FEED WATER	A106-B / A105
N3A/B	2	2 1/2"	80	ANSI 300# WN.RF	SAFETY VALVE	A106-B / A105
N4	1	4"	80	ANSI 300# WN.RF	AUX. VALVE	A106-B / A105
N5	1	1"	160	ANSI 300# LWN.RF	VENT	A106-B / A105
N6A/B	2	1"	160	ANSI 300# LWN.RF	PI/PT	A106-B / A105
N7	1	1 1/2"	160	ANSI 300# LWN.RF	CONTINUOUS BLOW DOWN	A106-B / A105
N8	1	1"	160	ANSI 300# LWN.RF	CHEMICAL INJECTION	A106-B / A105
N9A/B	2	1 1/2"	160	ANSI 300# LWN.RF	WATER COLUMN	A106-B / A105
N9C/D	2	1 1/2"	160	ANSI 300# LWN.RF	WATER COLUMN	A106-B / A105
N10	1	2"	160	ANSI 300# LWN.RF	BOTTOM BLOW DOWN	A106-B / A105
N11A/B/C/D	4	3/4"	160	ANSI 300# LWN.RF	DRAIN	A106-B / A105



Daelim Industrial Co., Ltd.	
JOB NO. :	100580
A	- APPROVED
AAN	- APPROVED
RFC	- RETURN FOR CORRECTION
R	- REJECTED
NA	- NOT APPLICABLE
SIGNED BY :	DATE :
DAELIM PERMISSION TO PROCEED OR REVIEW TAKEN ON VENDOR PRINTS SHALL NOT RELIEVE VENDOR FROM ITS RESPONSIBILITIES OR LIABILITIES UNDER THE PURCHASE ORDER	

REV.	DATE	DESCRIPTION	Y.H. LEE	J.Y. SUNG	H.O. LEE	H. KANG
30-JUN-2014		FINAL				
18-DEC-2013		FOR CONSTRUCTION				

THIS DWG IS THE PROPERTY OF DIC. THE INFORMATION CONTAINED HEREON MAY NOT BE USED OR COPIED IN ANY MANNER WITHOUT THE WRITTEN PERMISSION OF THE OWNER.

Pocheon LNG Power Plant
Pocheon Power Co.,Ltd.

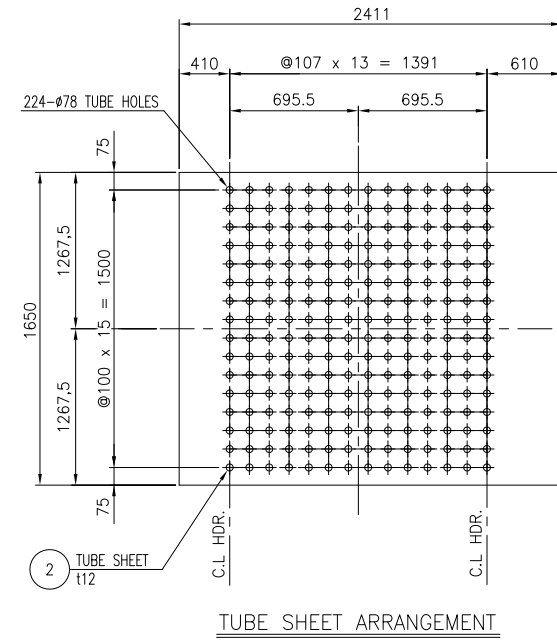
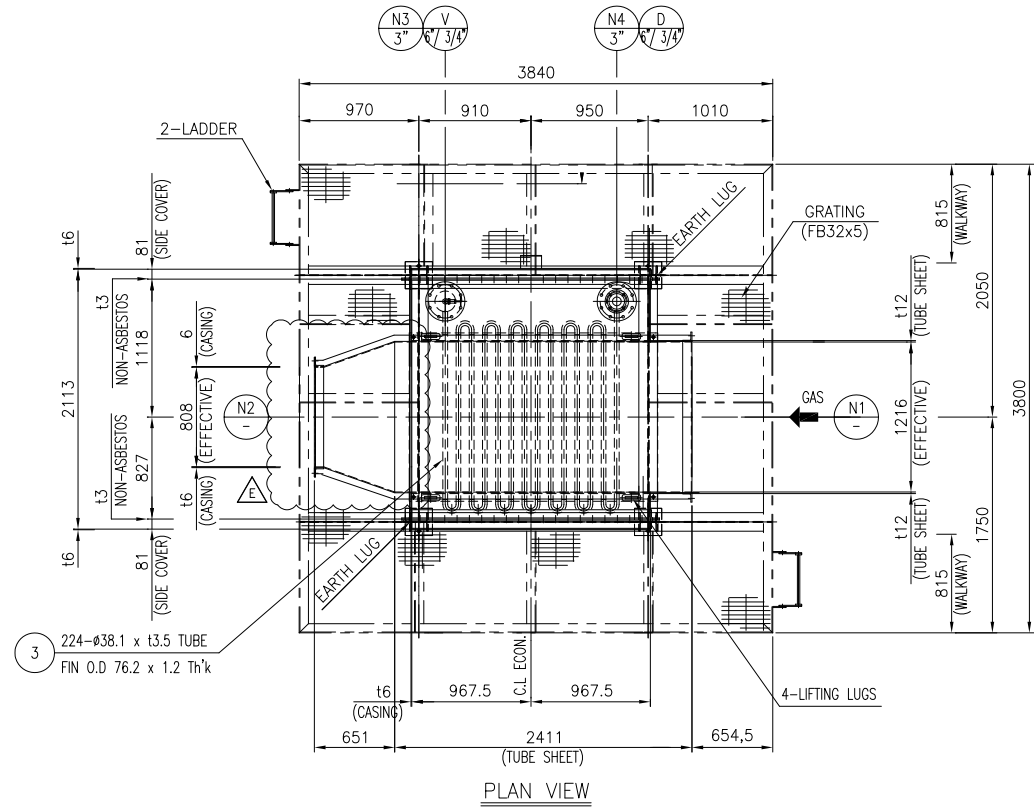
DAELIM TAEYOUNG

AUXILIARY BOILER
GENERAL ASSEMBLY DWG

SCALE	1/1	DATE	
DRAWN BY	T.M.KIM	20-MAR-2012	
CHECKED BY			
CHECKED BY	D.K.LEE	20-MAR-2012	
APPROVAL	H.KANG	20-MAR-2012	
APPROVAL	B.H.SEO	20-MAR-2012	
CLIENT APPROVAL			

CONTRACT NO.	SHEET NO.	DWG. NO.	REV. NO.
100580		VP-100580-16-119-001-104	1

FILE NAME : VP-100580-16-119-001-104

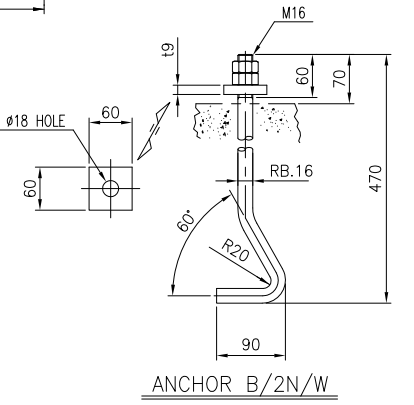
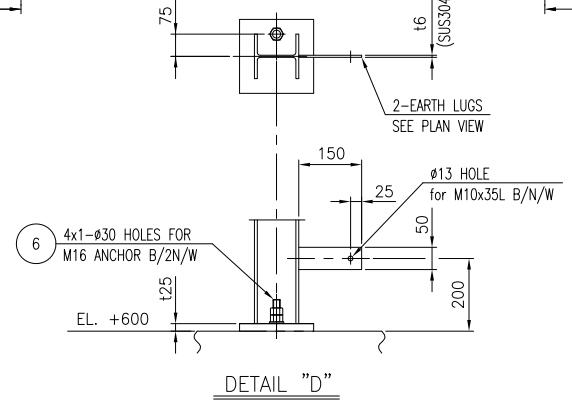
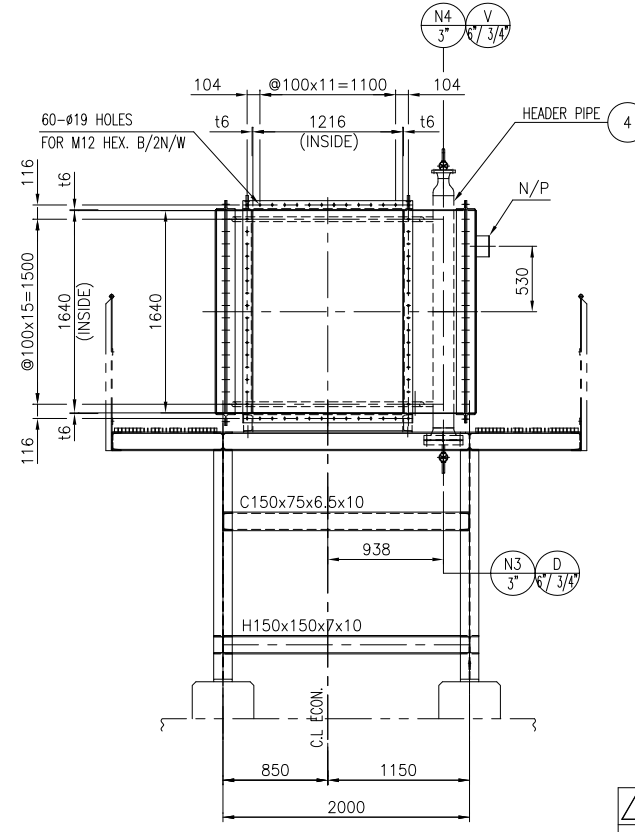
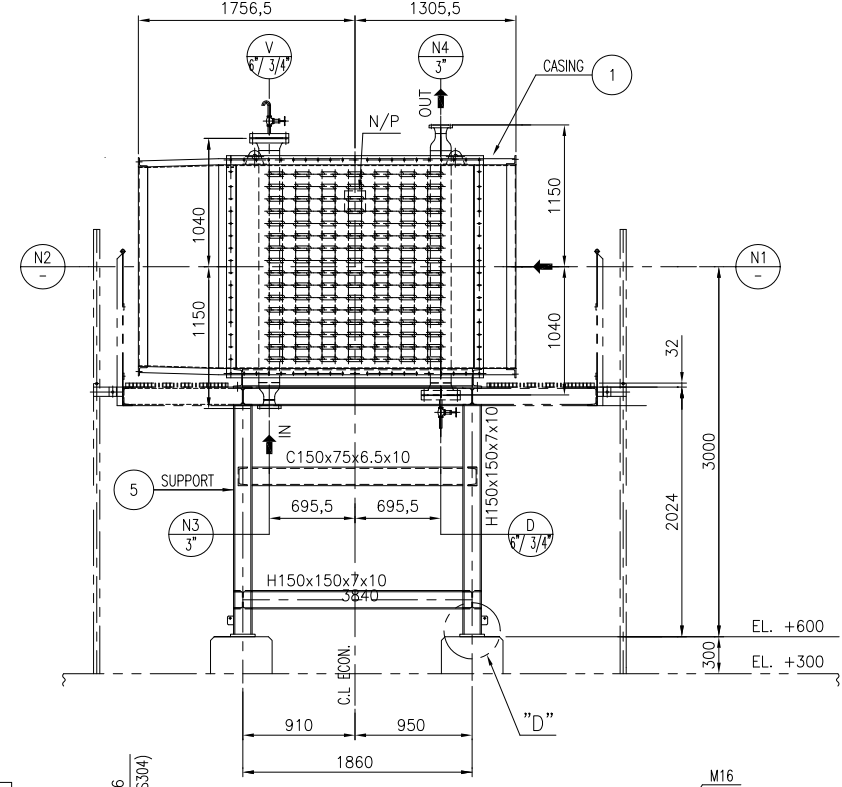
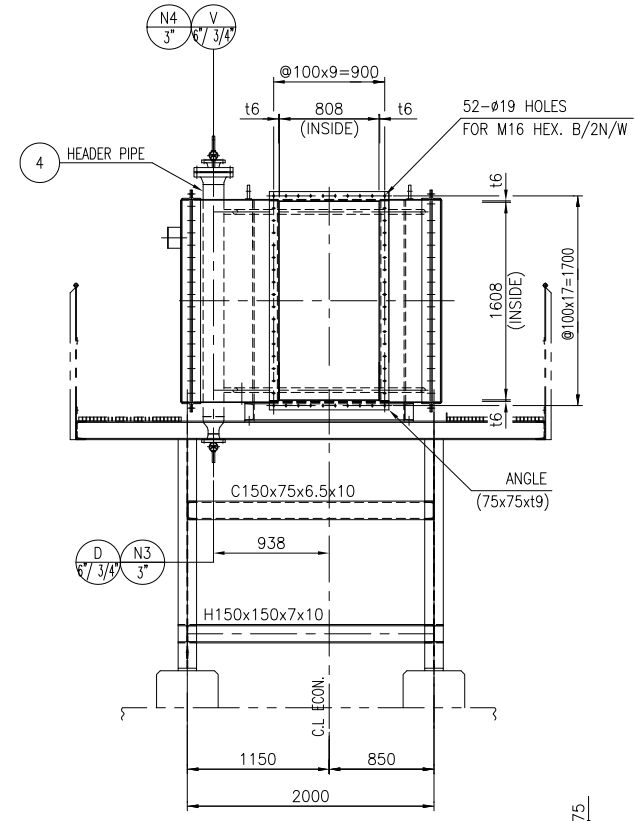


DESIGN DATA						
CODE	ASME SEC. I '2010 ED.	TYPE	FIN TUBE			
TEMA CLASS	-	CODE STAMP	NO			
PRESSURE (mmH ₂ O / kg/cm ² G)	DESIGN	SHELL SIDE 600 mmH ₂ O	TUBE SIDE 25 kg/cm ² G	WEIGHT (kg)	ERECTION	-
	OPERAT.	69 mmH ₂ O	18 kg/cm ² G		EMPTY	4153
TEMP. (°C)	DESIGN	335	280		OPERAT.	4394
	OPERAT.	285	142.4		FULL OF WATER	4410
TEST PRESSURE (mmH ₂ O / kg/cm ² G)	HYDRO.	- mmH ₂ O	32.5 kg/cm ² G	FIRE PROOF. (mm)	NO	
	PNEUM.	900 mmH ₂ O	-	INSULATION (mm)	150	
CORR. ALLOW. (mm)		2	3 (TUBE : 0)	PAINT	SEE NOTE.2	
RADIOGRAPH	NO	SEAMLESS	SP. GR.		-	
JOINT EFF.	0.7	1	SURFACE AREA (m ²)		390	
P.W.H.T	NO	NO	VOLUMN (m ³)		-	
FLUID	FLUE GAS	FEED WATER	REGULATION		-	
CONTENT LETHAL	NO	NO	WIND & SEISMIC		N/A	
NO. OF PASS	1	14	SEISMIC FACTOR		K.B.C 2009 / ZONE 1	

MATERIAL SPECIFICATION					
NO.	DESCRIPTION	MATERIAL	Q'TY	SIZE	REMARK
1	CASING	A283-C	1	t6	
2	TUBE SHEET	A283-C	2	t12	
3	TUBE / FIN	A178-A / A1008	224	0.038.1x3.5t / H19.05x1.2t	
4	HEADER PIPE	A106-B	2	6" SCH.80 / 3" SCH.80	
5	SUPPORT	A36	1	H150x150x7x10	
6	ANCHOR B/2N/W	A307-B/A563-A	4	M20-700L	

NOZZLE SCHEDULE									
NO. MARK	QTY	SIZE	SCH.	RATING	TYPE FACING	PAD (tx ϕ)	DESCRIPTION	*PROJ.	
N1	1	1216x1640	t6	-	-	-	FLUE GAS INLET	SEE DWG.	
N2	1	808x1608	t6	-	-	-	FLUE GAS OUTLET	SEE DWG.	
N3	1	3"	80	ANSI 300#	W.N R.F.	-	FEED WATER INLET	SEE DWG.	
N4	1	3"	80	ANSI 300#	W.N R.F.	-	FEED WATER OUTLET	SEE DWG.	
V	1	6" / 3/4"	80	ANSI 300#	W.N R.F.	-	VENT	SEE DWG.	
D	1	6" / 3/4"	80	ANSI 300#	W.N R.F.	-	DRAIN	SEE DWG.	

NOTE
1. ALL DIMENSIONS ARE IN MILLIMETER, UNLESS NOTED OTHERWISE.
2. PAINT SPECIFICATION SHALL BE ACCORDANCE WITH 'GENERAL SPECIFICATION FOR CLEANING AND PAINTING, DOC. NO. : 100580-9-000-P-02-003.



Doelim Industrial Co., Ltd.	
JOB NO. :	100580
A	- APPROVED
ANN	- APPROVED AS NOTED
RFC	- RETURN FOR CORRECTION
R	- REJECTED
NA	- NOT APPLICABLE
SIGNED BY :	DATE :
DAELIM PERMISSION TO PROCEED OR REVIEW TAKEN ON VENDOR PRINTS SHALL NOT RELIEVE VENDOR FROM ITS RESPONSIBILITIES OR LIABILITIES UNDER THE PURCHASE ORDER	

REV.	DATE	DESCRIPTION	DRAWN	CHK'D	APPL.	APPL.
30-JUN-2014		FINAL	Y.H. LEE	D.K. LEE	H. KANG	H. KANG
04-MAR-2014		FOR CONSTRUCTION	Y.H. LEE	D.K. LEE	H. KANG	H. KANG

THIS DWG IS THE PROPERTY OF DIC. THE INFORMATION CONTAINED HEREON MAY NOT BE USED OR COPIED IN ANY MANNER WITHOUT THE WRITTEN PERMISSION OF THE OWNER.

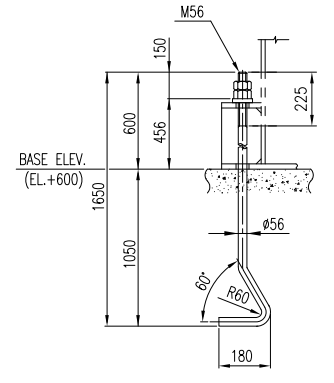
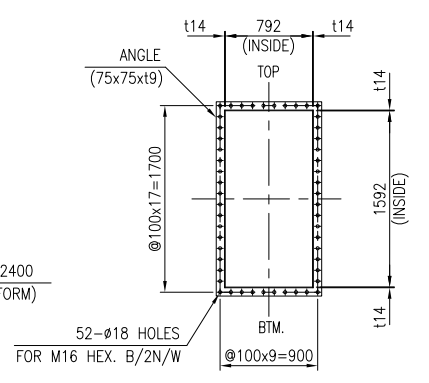
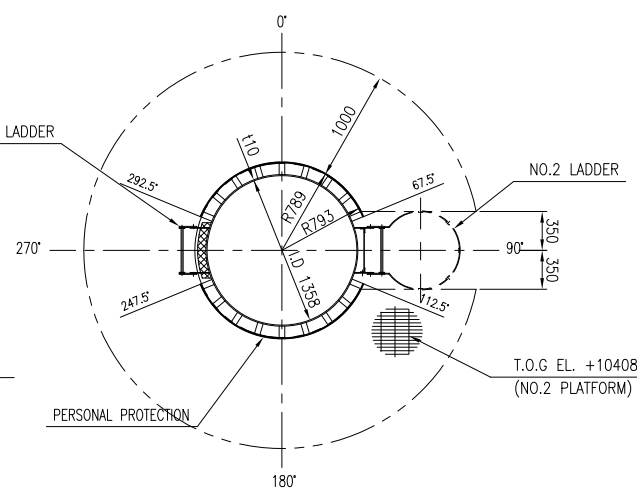
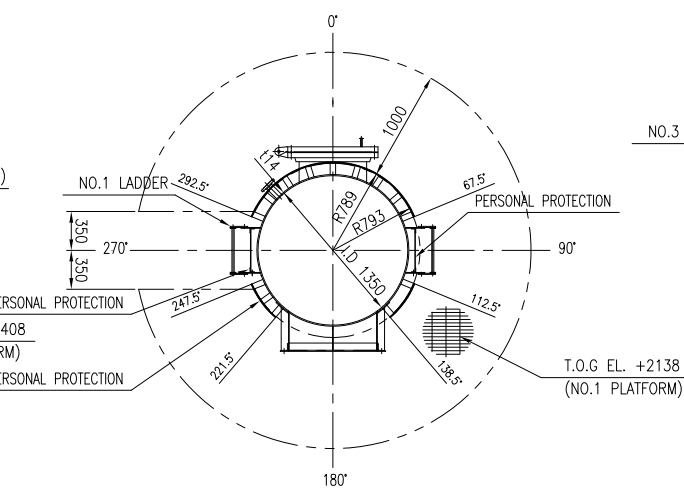
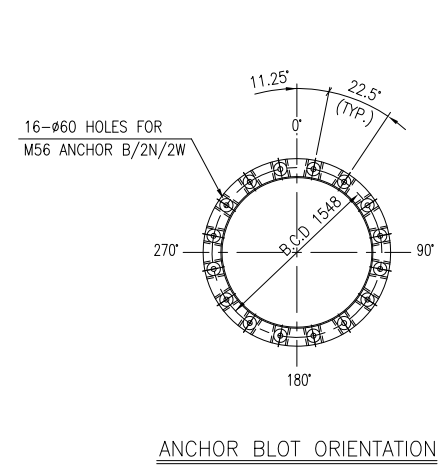
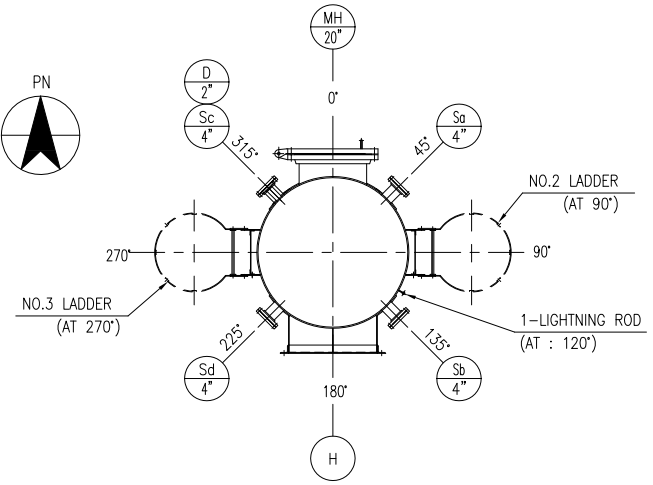
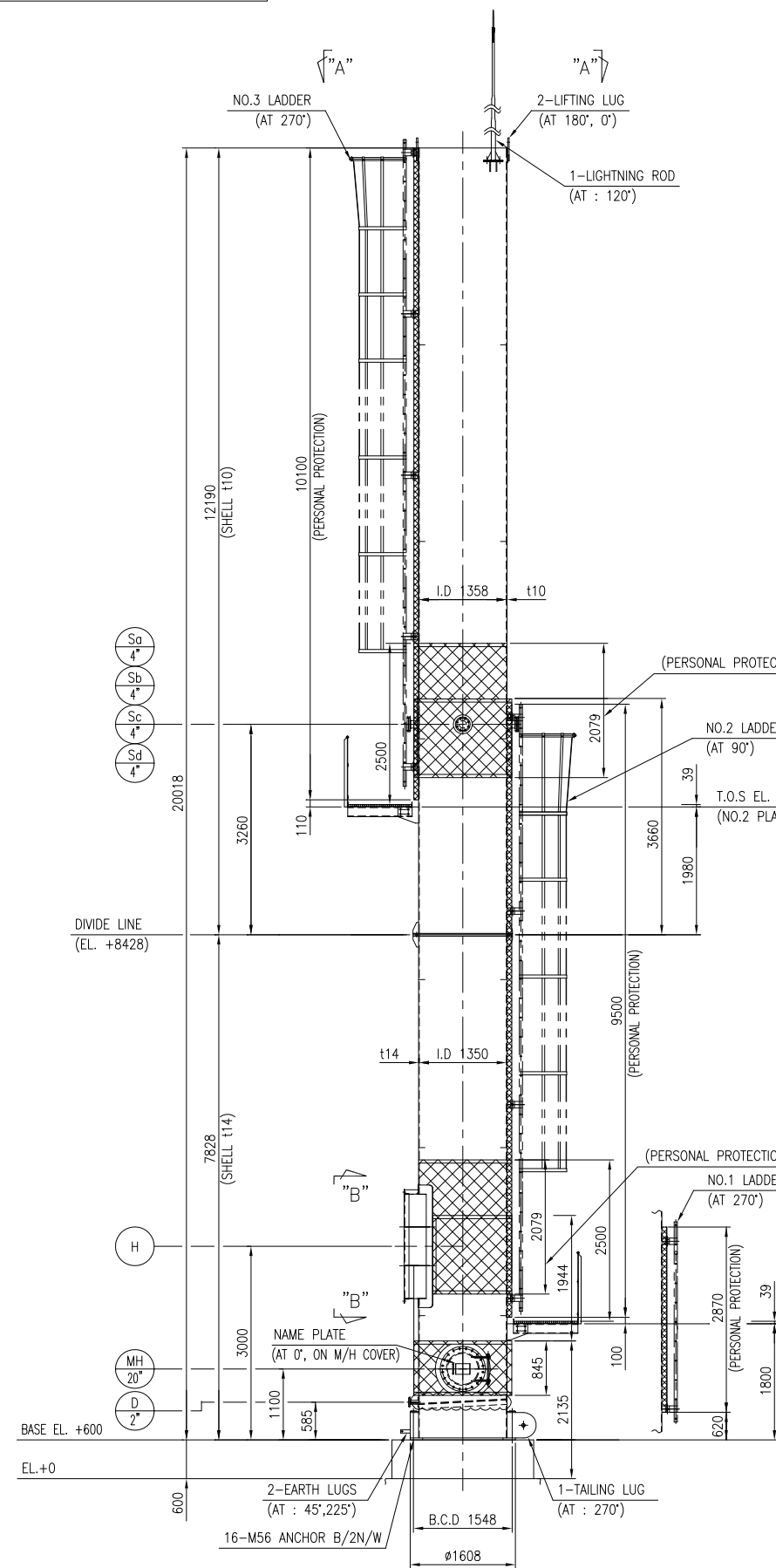
Pocheon LNG Power Plant
Pocheon Power Co.,Ltd.

DAELIM TAEYOUNG

ECONOMIZER
GENERAL ASSEMBLY

SCALE	1/10	DATE	CONTRACT NO.	SHEET NO.	DWG. NO.	REV. NO.
DRAWN BY	T.M. KIM	31-MAY-2011			VP-100580-16-119-001-108	1
CHECKED BY		31-MAY-2011				
CHECKED BY	D.K. LEE	31-MAY-2011				
APPROVAL	H. KANG	31-MAY-2011				
APPROVAL	H. KANG	31-MAY-2011				
CLIENT APPROVAL						

A
B
C
D
E
F



Daelim Industrial Co., Ltd.	
JOB NO. :	100580
A	- APPROVED
AAN	- APPROVED AS NOTED
RFC	- RETURN FOR CORRECTION
R	- REJECTED
NA	- NOT APPLICABLE
SIGNED BY :	DATE :
DAELIM PERMISSION TO PROCEED OR REVIEW TAKEN ON VENDOR PRINTS SHALL NOT RELIEVE VENDOR FROM ITS RESPONSIBILITIES OR LIABILITIES UNDER THE PURCHASE ORDER	

- GENERAL NOTES**
- UNLESS OTHERWISE NOTED ON DRAWINGS, ALL DIMENSIONS ARE IN MILLIMETERS.
 - BLANK
 - FLANGE BOLT HOLES SHALL STRADDLE NORTH-SOUTH CENTER LINE OR NATURAL HORIZONTAL AND VERTICAL CENTER LINE OF VESSEL
 - NOZZLE PROJECTIONS ARE FROM CENTER LINE OF VESSEL OR NEAREST TANGENT LINE TO GASKET FACE OF FLANGE.
 - GASKET CONTACT SURFACE OF FLANGE : 125~250 AARH.
 - ALL REINFORCEMENT PLATES FOR NOZZLE SHALL BE PROVIDED 1-NPT 1/8 TELL-TALE HOLES WITH 304 S.S PLUG AFTER TEST AND LOCATED AT LOWER SIDE.
- LONG CL.
- 1-NPT 1/8" TELL-TALE HOLE WITH HEAVY GREASE (FOR 16" AND BELOW)
- 2-NPT 1/8" TELL-TALE HOLE WITH HEAVY GREASE (FOR 18" UP TO 36")

DESIGN DATA

CODE	ASME STS-1	TYPE	VERTICAL
FLUID	FLUE GAS	CODE STAMP	NO
PRESSURE (kg/cm ² g)	DESIGN 0.02	REGULATION	NO
TEMP. (°C)	DESIGN 250	WEIGHT (KG)	ERUCTION 12,919
	OPERAT. 180		EMPTY 12,919
			OPERATING 12,919
TEST PRESSURE (kg/cm ² g)	HYDRO. -	VOLUME (M ³)	-
	PNEUM. -	EXPANDED METAL	t3
CORR. ALLOW. (mm)	3.2	FIRE PROOF. (MM)	NO
RADIOGRAPH (INNER/OUTER SHELL)	NO/NO	PERSONAL PROTECTION	YES
JOINT EFF. (INNER/OUTER SHELL)	0.7/0.7		
WIND	KBC 2009		
SEISMIC FACTOR	KBC 2009		
PAINT (IN/OUTSIDE)	SPEC.		

WEIGHT

ERUCTION WEIGHT	Kg	12,919
EMPTY WEIGHT	Kg	12,919
OPERATING WEIGHT	Kg	12,919
FULL OF WATER WEIGHT	Kg	-
CAPACITY	m ³	-

MATERIAL SPECIFICATION

SHELL	A283-C	NOZZLE PIPE	A106-B
REINF. PAD	A283-C	NOZZLE FLANGE	A105
BOLT & NUT	A193-B7/A194-2H	NECK PLATE	A283-C
GASKET	NON-ASBESTOS	EARTH LUG	304SS
INSUL. RING / SUPPORT	-	LIFTING LUG	A283-C
FIRE PROOPING CLIP	-	NAME PLATE / BRACKET	304 S.S / A283-C
LADDER & P/F	A36		

NOZZLE SCHEDULE

NO. MARK	QTY	SIZE	SCH.	RATING	TYPE	FACING	PAD (tx#)	DESCRIPTION	*PROJ.
H	1	-	-	-	-	-	t14	FLUE GAS	910
Sa-Sd	4	4"	80	ANSI 150#	S.W	R.F	t10x#260	GAS SAMPLING (W/B.F)	840
D	1	2"	160	ANSI 150#	S.W	R.F	t14x#160	DRAIN	840
MH	1	20"	t14	t12 PLATE FL.			t14x#1100	MANHOLE (W/HINGLE)	880

FINAL

30-JUN-2014	FINAL	Y.H. LEE	W.S. YANG	D.K. LEE	H. KANG
04-MAR-2014	FOR CONSTRUCTION	Y.H. LEE	W.S. YANG	D.K. LEE	H. KANG
REV.	DATE	DESCRIPTION	DRAWN	CHK'D	APPL' APP'L
					CONSTRUCTION DIVISION

THIS DWG IS THE PROPERTY OF DIC. THE INFORMATION CONTAINED HEREON MAY NOT BE USED OR COPIED IN ANY MANNER WITHOUT THE WRITTEN PERMISSION OF THE OWNER.

Pocheon LNG Power Plant
Pocheon Power Co.,Ltd.



STACK GENERAL ASSEMBLY

SCALE	1/10	DATE	
DRAWN BY	W.S. YANG	15-FEB.-2012	
CHECKED BY	D.K. LEE	15-FEB.-2012	
CHECKED BY	D.K. LEE	15-FEB.-2012	
APPROVAL	B.H. LEE	15-FEB.-2012	
CLIENT APPROVAL			

CONTRACT NO.	SHEET NO.	DWG. NO.	REV. NO.
100580		VP-100580-16-119-001-114	1

